



Young people

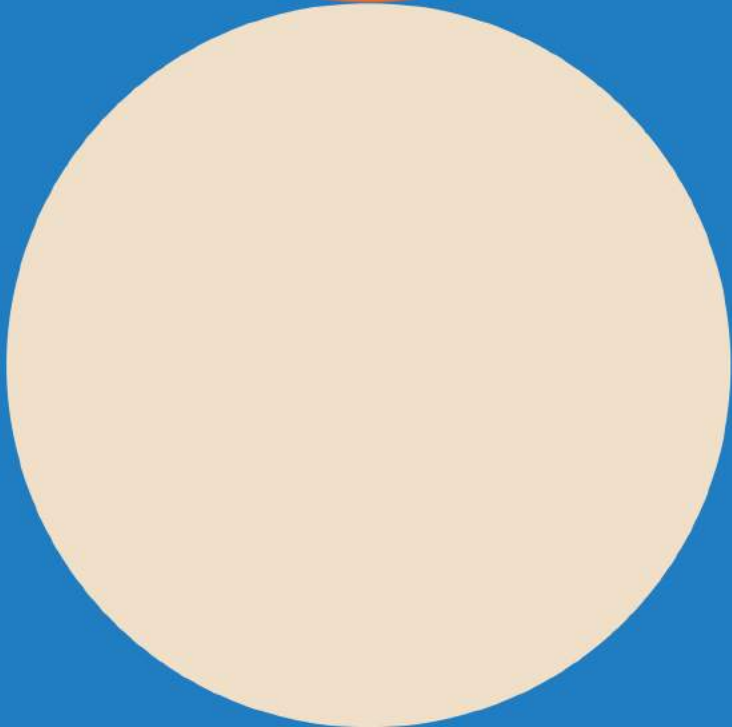
Communities of
Penrith City LGA



Young people describes 12–24-year-olds. This cohort includes young people in two different 'life stages' – secondary schoolers (12–17 year olds) and tertiary education/independent (18–24 year olds).



**Who
are our
young
people?**



Population

Penrith City LGA is home to many active and inquisitive young people.

Young people make up 17% of our city's population.

12-17 year olds

2021 16,990 7.8%

2016 15,203 7.8%

18-24 year olds

2021 20,190 9.3%

2016 19,370 9.9%



Location

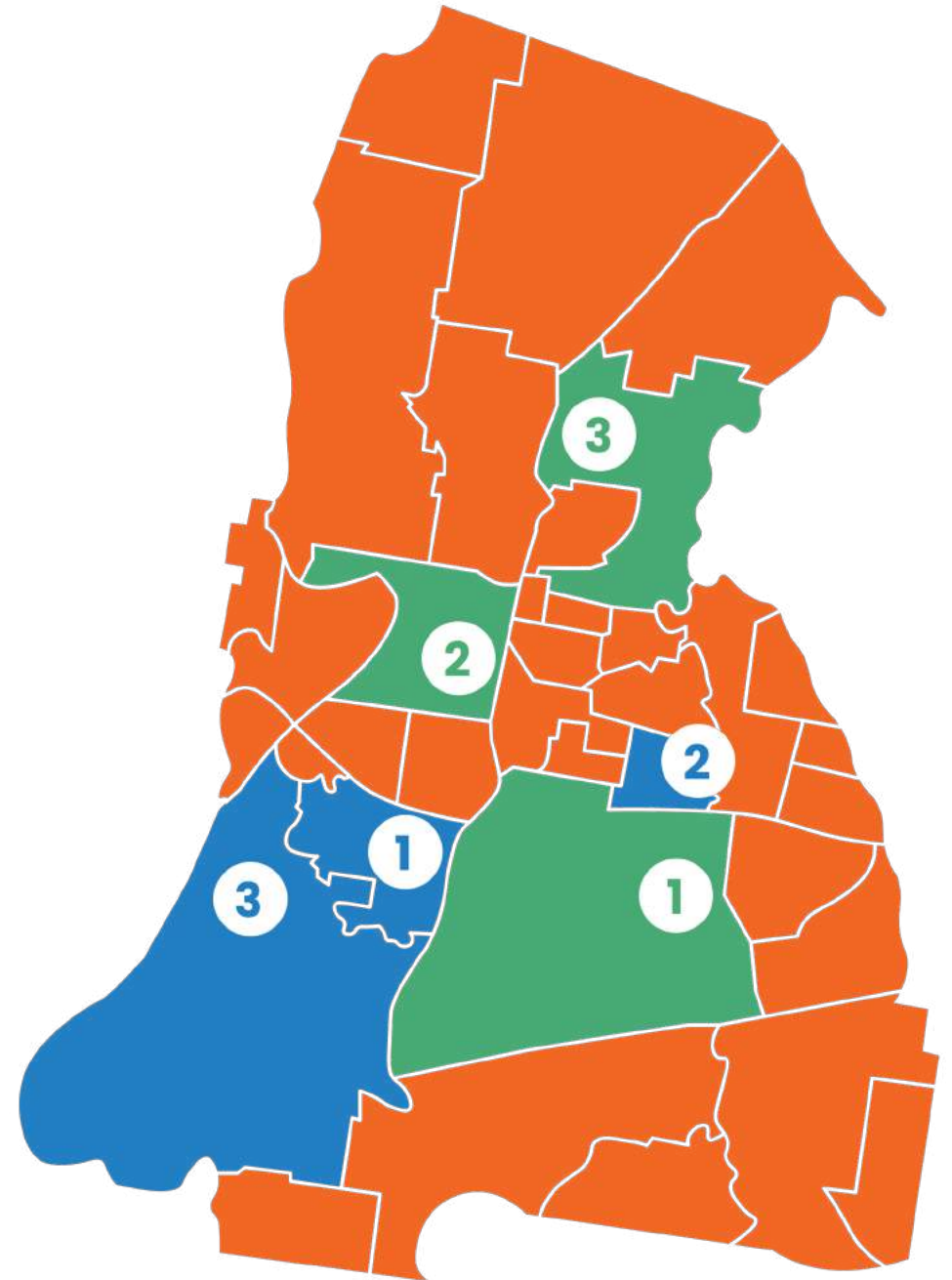
Young people live in every suburb of Penrith City.

Suburbs with the largest proportion of 12-17 year olds:

- 1. Glenmore Park (9.8%)**
- 2. Claremont Meadows (9.8%)**
- 3. Mulgoa (9.7%)**

Suburbs with the largest proportion of 18-24 year olds:

- 1. Orchard Hills (11.6%)**
- 2. Penrith (11.3%)**
- 3. Llandilo (11.2%)**



Birthplace



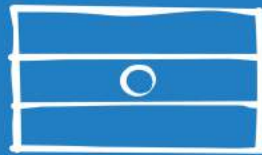
86% **82%**

of 12-17
year olds

of 18-24
year olds

were born in Australia.

**Of those
born overseas,
the most
common overseas
birthplaces were:**



India



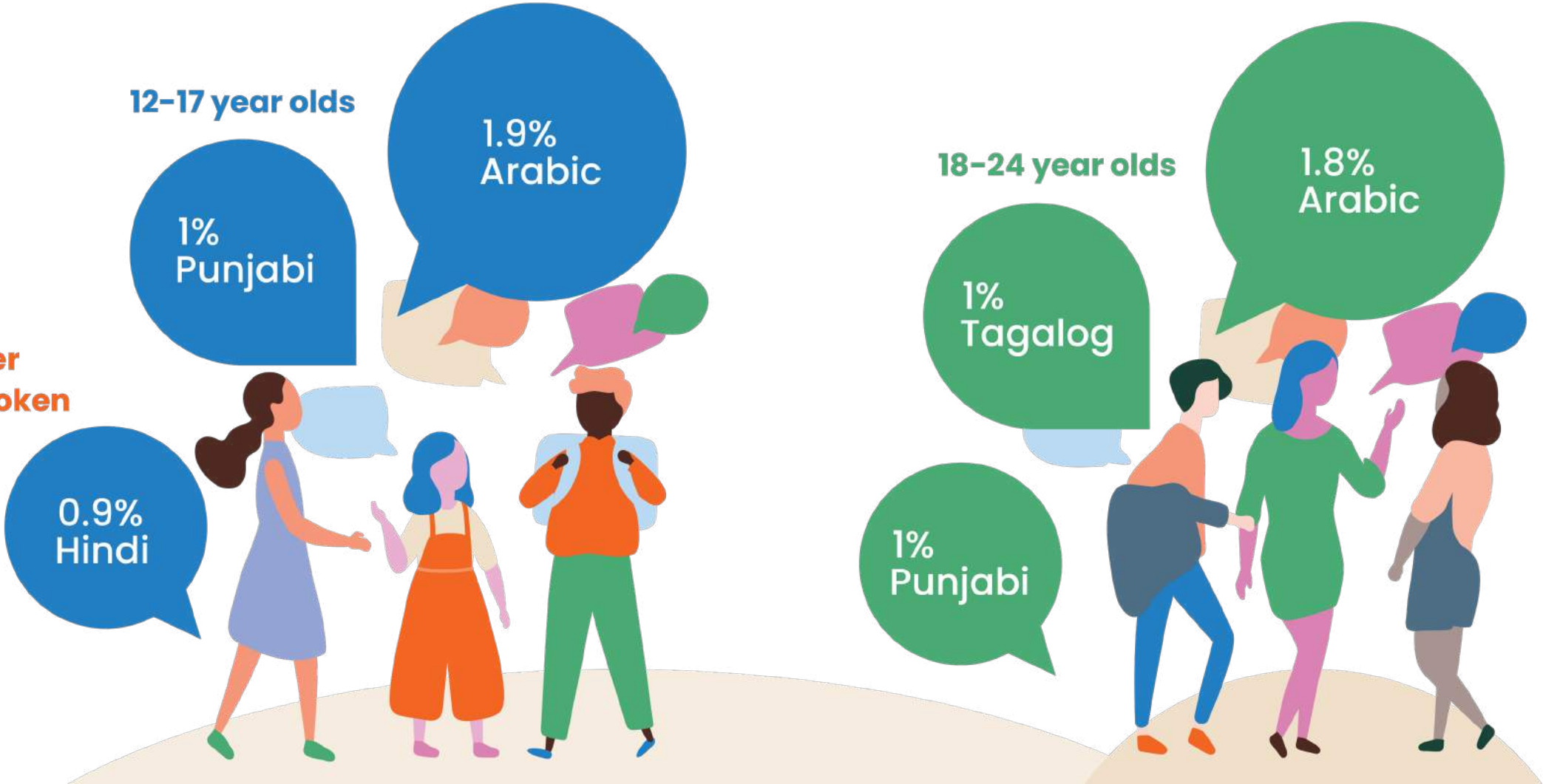
New Zealand



Philippines

Languages

Languages other than English spoken at home:



Households

- 12-17 year olds
- 18-24 year olds
- Penrith City LGA

Couples with children¹
74%
58%
35%

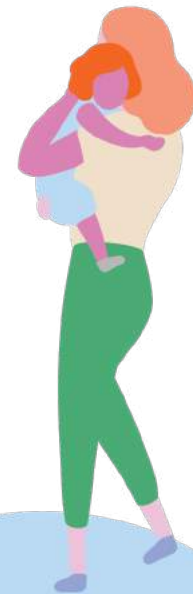
Couples without children
0.6%
13%
21%

One parent families¹
21%
22%
14%

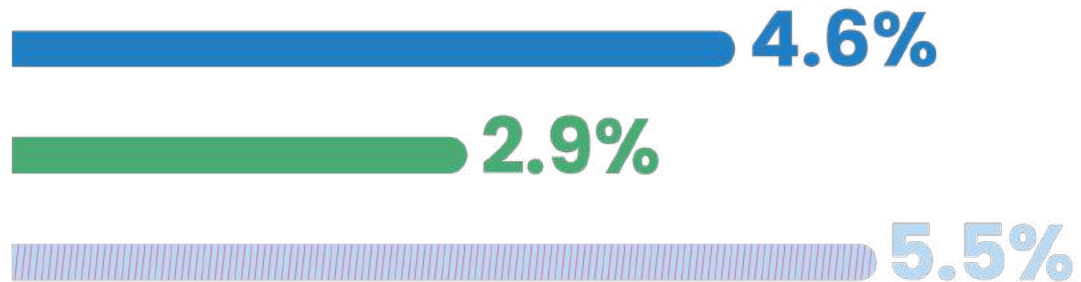


In households where couples with children, or one-parent families live, the percentages attributed to Penrith City LGA's youth population indicates that this cohort were living as the children in these households.

Health



Need of assistance
due to disability



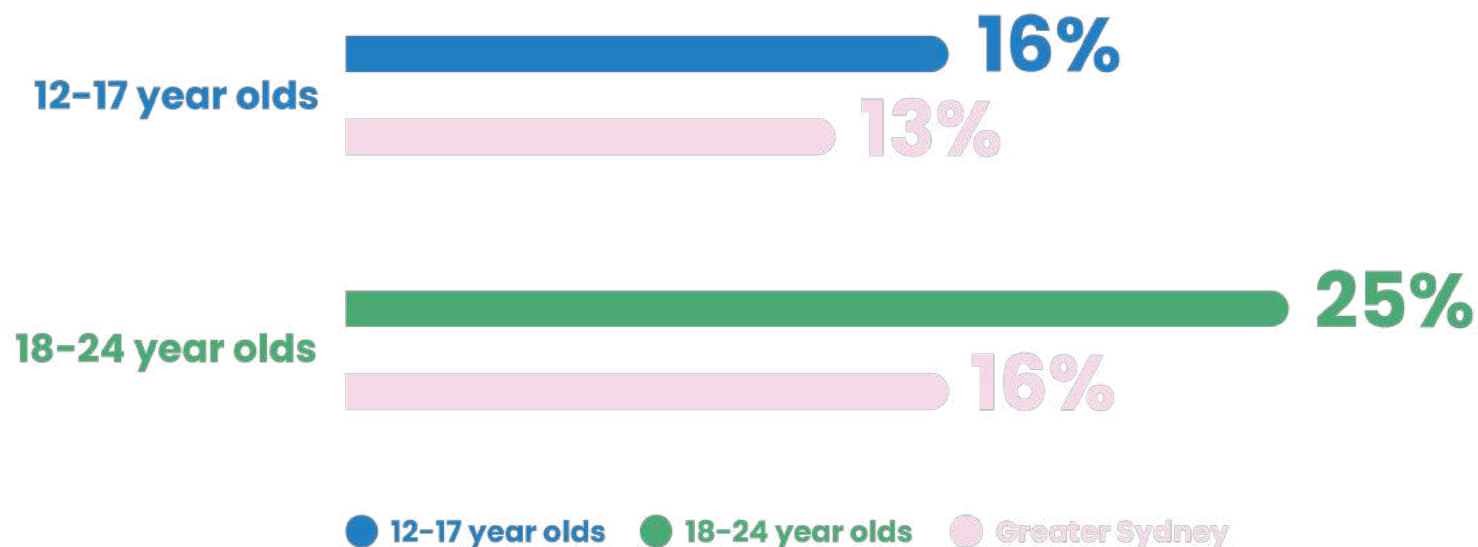
● 12-17 year olds ● 18-24 year olds ● Penrith City LGA

4% of Penrith City LGA's young people have a need for assistance due to disability.

Health

18-24 year olds in Penrith City LGA were 7% more likely to have a long-term health condition when compared with Greater Sydney.

Young people with at least one long-term health condition compared to Greater Sydney

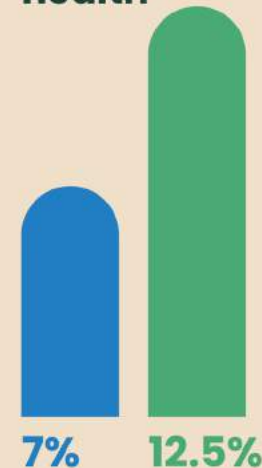


The most common health conditions for our young people are asthma and mental health conditions.

Asthma



Mental health



**How do
our young
people live?**



Housing

Most 12–24 year olds in Penrith City live in separate houses. However, there has been a slight increase in medium and high density living for young people since 2016.

● 12–17 year olds ● 18–24 year olds ● Penrith City LGA



Separate house



Medium density

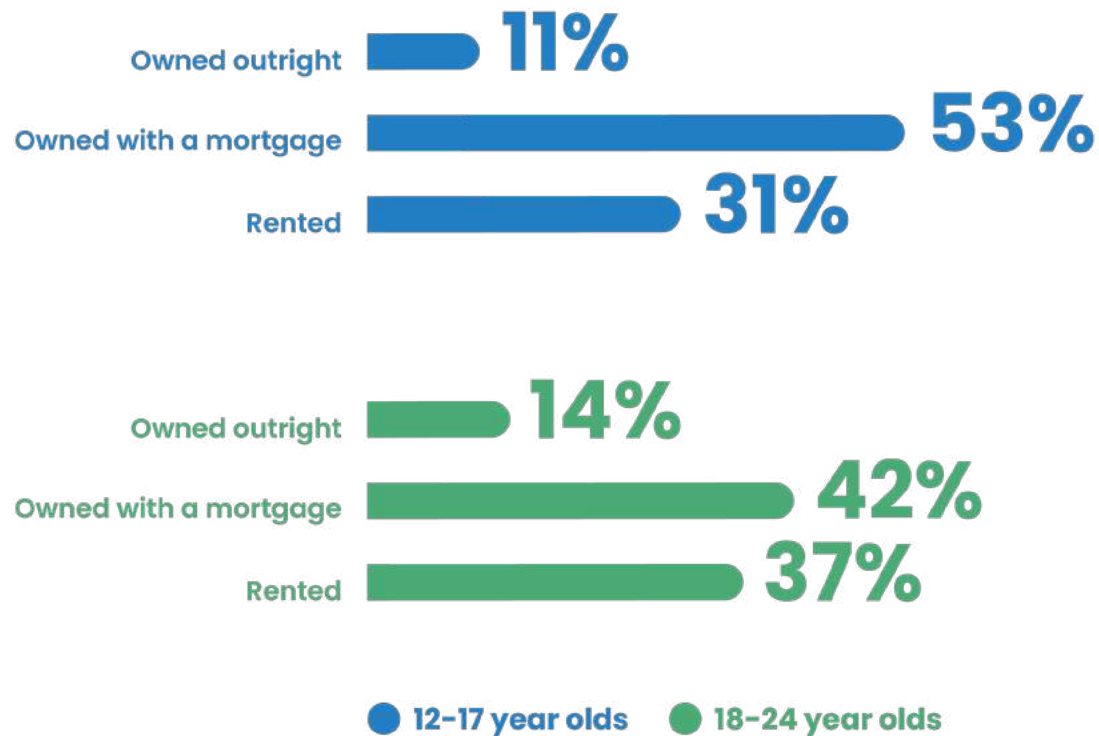


High density



Housing tenure

Since 2016 there has been a decrease in outright ownership and an increase in rent tenure types for both age cohorts, but significantly more for the 18–24-year-old cohort. These statistics represent houses where young people live as children.





**What do our
young people do?**

Education

Of those young people who were between 15–17 years old at the time of the 2021 Census:



92%

had a secondary school qualification



1.2%

had a certificate I to IV qualification



0.4%

stated having no formal qualification

43%

of 18–24 year olds have completed a non-school qualification. Of these, the most common fields of study are:



6.3%

Management and Commerce



5.6%

Society and Culture



4.4%

Architecture and Building

Employment

Of our 15-17 year olds: 38% are in the workforce, representing 2,961 of Penrith City residents.

Employed



Of those employed:

78% are employed part time

9% are employed full time

Unemployed



15-17 year olds

1 **53%**
Accommodation/
Food services

2 **18%**
Retail trade

3 **10%**
Construction



Employment

Of our 18-24 year olds: 77% are in the workforce, representing 14,679 of Penrith City residents.

Employed



33% employed part-time
41% employed full time

Unemployed



3% looking for part-time work
5% looking for full-time work

18-24 year olds

1

16%

Retail trade

2

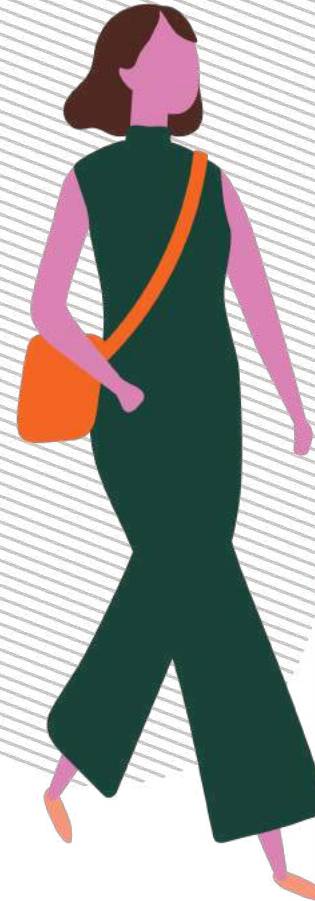
16%

Construction

3

12%

Accommodation/
Food services



Income

Where 12–17 year olds reside, incomes are generally lower than those of 18–24 year olds in both Penrith City and Greater Sydney. This may be related to the different life stages of income earners or parents' employment status in relation to the lifecycle of a household.

The median household income for households where 12–17 year olds live is **\$2,532**.

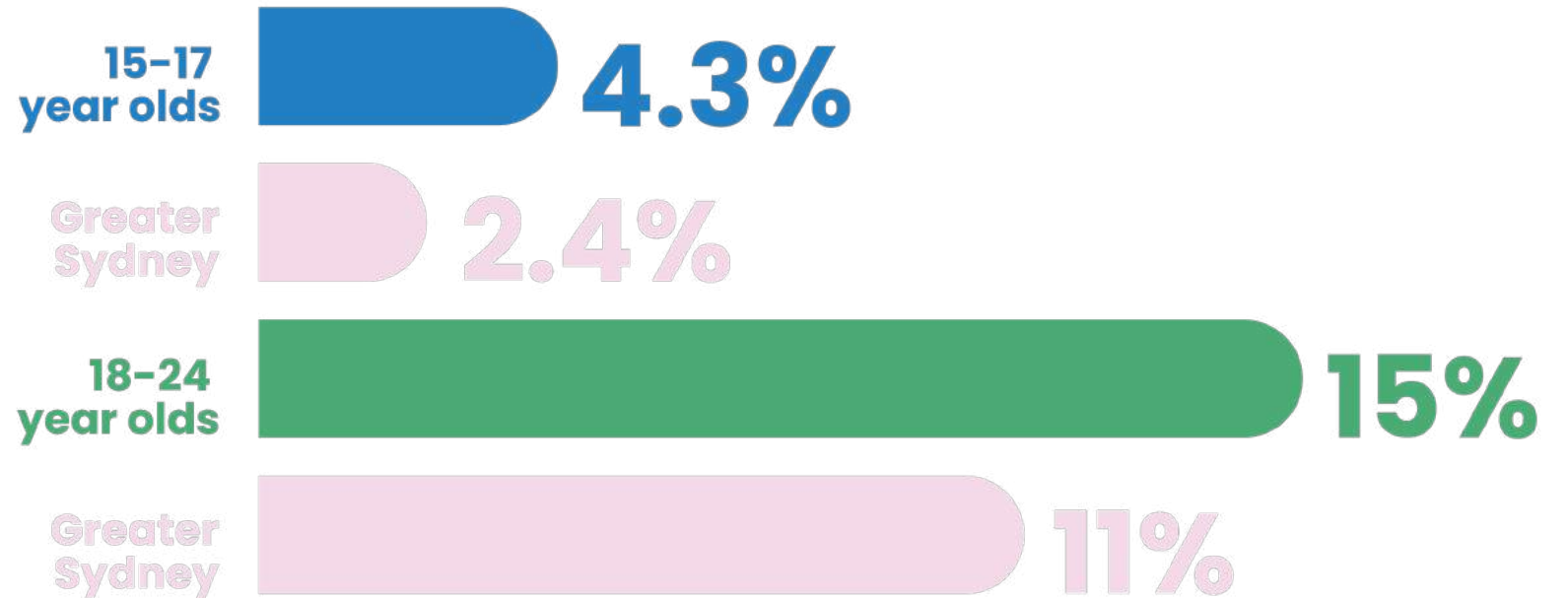
The median household income for households where 18–24 year olds live is **\$2,831**.



Youth disengagement

Compared to Greater Sydney, Penrith City has higher rates of youth disengagement from education and /or employment.

Disengagement from education or employment in younger age groups can indicate a lack of access to employment or education facilities or a population in need of targeted services to assist them in gaining a foothold in society.



Summary



Young people account for 17% of the total Penrith population.

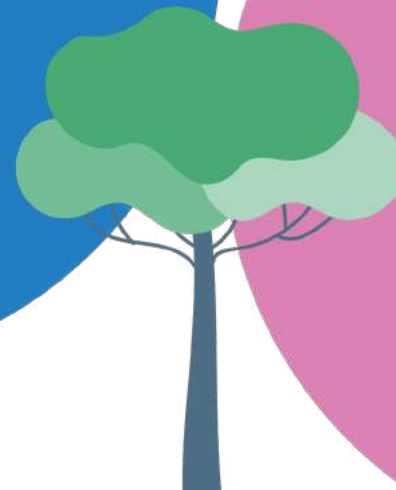


12-17 year olds typically live in family households, while 18-24 year olds have begun forming their own households, sometimes in medium or high-density housing.

The most common health conditions for our young people are asthma and mental health.



The majority of young people were born in Australia.



More information

This community profile is part of a suite of resources. See Penrith City Council's [Community Profile](#) for more resources like this.

Note: Much of the content of this report has been sourced from .id – informed decisions. Some of the .id sourced content is a derivative of Australian Bureau of Statistics (ABS) data.

Note: Unless otherwise stated, data from 2021.